

Ref: FOI/GS/ID 6508

**Please reply to:**  
FOI Administrator  
Trust Management  
Maidstone Hospital  
Hermitage Lane  
Maidstone, Kent  
ME16 9QQ  
Email: [mtw-tr.foiadmin@nhs.net](mailto:mtw-tr.foiadmin@nhs.net)  
[www.mtw.nhs.uk](http://www.mtw.nhs.uk)

26 March 2021

### **Freedom of Information Act 2000**

I am writing in response to your request for information made under the Freedom of Information Act 2000 in relation to Mortality figures relating to heart attacks for 2019.

*You asked:*

- 1. Mortality figures relating to heart attacks for 2019.*
- 2. Male vs female admissions for heart attacks and the number of deaths following admissions for men vs women for 2019.*

Trust response:

Please see the attached reports.

Basket: **Diagnoses Metric: Mortality (in-hospital)** Time period: **Last available 12 months**

ICD10 (3-char): **I21 Acute myocardial infarction, I22 Subsequent myocardial infarction**

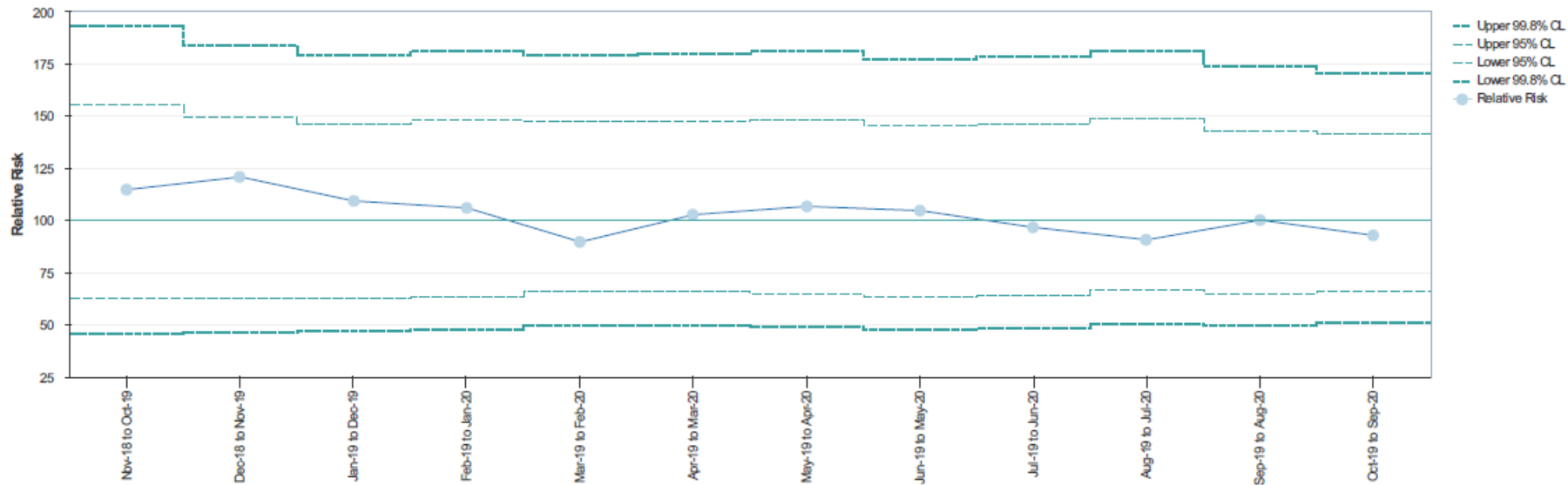
Patients: **345** Superspells: **353 (102.3)** First / Last: **Oct 2019 / Sep 2020** Deaths: **25 (7.1%)** LOS: **5.6**

Expected: **27.0 (7.6%)** O-E: **-2.0 (-0.6%)** Relative Risk: **92.7 (60.0-136.9)** Model: **Month: Jul 2020** C-Statistic: **Multiple**

**Diagnoses | Mortality (in-hospital) | Oct 2019 - Sep 2020 | Trend (rolling 12 months)**

ICD10 (3-char): I21 Acute myocardial infarction, I22 Subsequent myocardial infarction

Period: **Rolling 12 months**



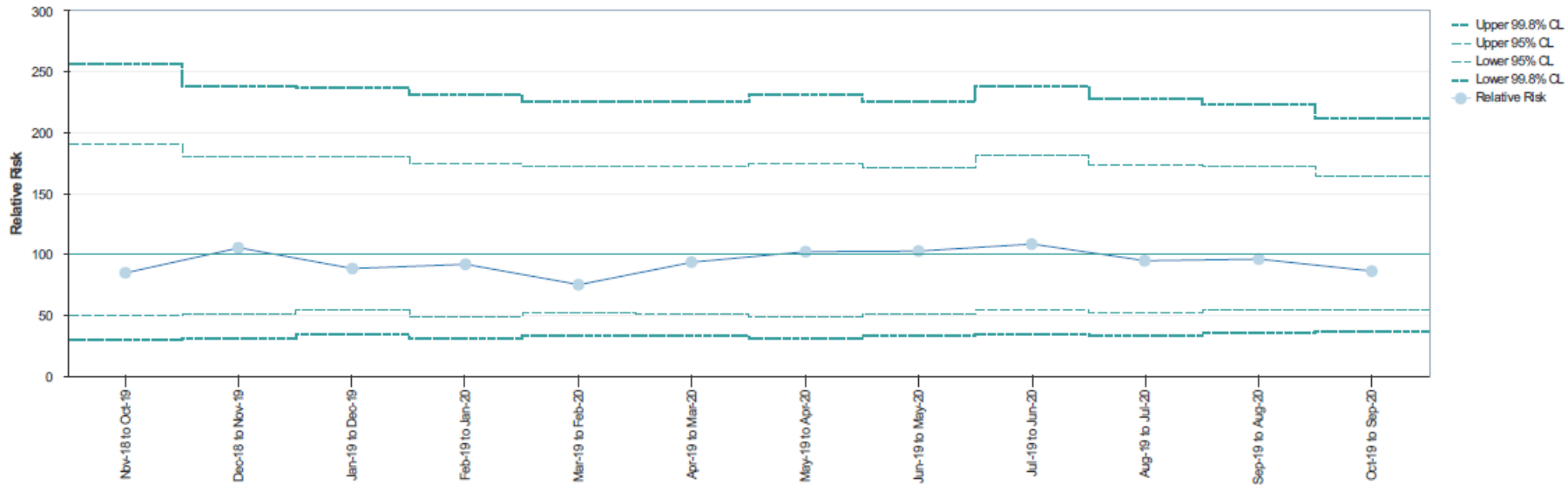
Trend (rolling 12 months)	Superspells	% of All Spells	Observed	Crude rate (%)	Expected	Expected rate (%)	Observed-expected	Relative risk	95% lower confidence limit	95% upper confidence limit
All	3,821	100.0%	3,826	279	7.3%	272.9	6.1	102.2	90.6	115.0
Nov-18 to Oct-19	292	7.6%	293	21	7.2%	18.3	2.7	114.7	71.0	175.3
Dec-18 to Nov-19	311	8.1%	312	25	8.0%	20.7	4.3	120.7	78.1	178.2
Jan-19 to Dec-19	317	8.3%	318	24	7.6%	22.0	2.0	109.2	70.0	162.5
Feb-19 to Jan-20	315	8.2%	316	23	7.3%	21.7	1.3	105.9	67.1	158.9
Mar-19 to Feb-20	317	8.3%	318	21	6.6%	23.4	-2.4	89.6	55.4	137.0
Apr-19 to Mar-20	323	8.5%	323	24	7.4%	23.4	0.6	102.6	65.8	152.7
May-19 to Apr-20	310	8.1%	310	24	7.7%	22.5	1.5	106.6	68.3	158.6
Jun-19 to May-20	309	8.1%	309	24	7.8%	22.9	1.1	104.6	67.0	155.6
Jul-19 to Jun-20	314	8.2%	314	22	7.0%	22.8	-0.8	96.6	60.5	146.2
Aug-19 to Jul-20	319	8.3%	319	21	6.6%	23.2	-2.2	90.6	56.1	138.5

Copyright © 2021, reused with the permission of the Health and Social Care Information Centre. Copyright © 2021 Dr Foster Limited, trading as Dr Foster, Registered Company No. 3812015. \*\*\*\* Data suppressed in accordance with the NHS Digital HES Analysis Guide December 2019.

Trend (rolling 12 months)	Superspells	% of All Spells	Observed	Crude rate (%)	Expected	Expected rate (%)	Observed-expected	Relative risk	95% lower confidence limit	95% upper confidence limit
Sep-19 to Aug-20	341	8.9%	341	25	7.3%	25.0	0.0	100.1	64.7	147.7
Oct-19 to Sep-20	353	9.2%	353	25	7.1%	27.0	-2.0	92.7	60.0	136.9

Basket: **Diagnoses Metric: Mortality (In-hospital)** Time period: **Last available 12 months**  
 ICD10 (3-char): **I21 Acute myocardial infarction, I22 Subsequent myocardial infarction** Sex: **Female**  
 Patients: **130** Superspells: **132 (101.5)** First / Last: **Oct 2019 / Sep 2020** Deaths: **11 (8.3%)** LOS: **5.3**  
 Expected: **12.8 (9.7%)** O-E: **-1.8 (-1.4%)** Relative Risk: **86.0 (42.9-153.8)** Model: **Month: Jul 2020** C-Statistic: **Multiple**

**Diagnoses | Mortality (in-hospital) | Oct 2019 - Sep 2020 | Trend (rolling 12 months)**  
 ICD10 (3-char): I21 Acute myocardial infarction, I22 Subsequent myocardial infarction | Sex: Female  
 Period: Rolling 12 months



Trend (rolling 12 months)	Superspells	% of All Spells	Observed	Crude rate (%)	Expected	Expected rate (%)	Observed-expected	Relative risk	95% lower confidence limit	95% upper confidence limit	
All	1,383	100.0%	1,383	117	8.5%	124.8	9.0%	-7.8	93.7	77.5	112.3
Nov-18 to Oct-19	97	7.0%	97	7	7.2%	8.3	8.5%	-1.3	84.6	33.9	174.3
Dec-18 to Nov-19	104	7.5%	104	10	9.6%	9.5	9.1%	0.5	105.1	50.3	193.3
Jan-19 to Dec-19	112	8.1%	112	9	8.0%	10.2	9.1%	-1.2	88.1	40.2	167.2
Feb-19 to Jan-20	112	8.1%	112	9	8.0%	9.8	8.8%	-0.8	91.6	41.8	173.8
Mar-19 to Feb-20	113	8.2%	113	8	7.1%	10.7	9.5%	-2.7	74.8	32.2	147.4
Apr-19 to Mar-20	119	8.6%	119	10	8.4%	10.7	9.0%	-0.7	93.3	44.7	171.6
May-19 to Apr-20	114	8.2%	114	10	8.8%	9.8	8.6%	0.2	101.9	48.8	187.4
Jun-19 to May-20	119	8.6%	119	11	9.2%	10.7	9.0%	0.3	102.4	51.1	183.3
Jul-19 to Jun-20	113	8.2%	113	11	9.7%	10.2	9.0%	0.8	108.2	53.9	193.6
Aug-19 to Jul-20	118	8.5%	118	10	8.5%	10.6	9.0%	-0.6	94.4	45.2	173.7

Copyright © 2021, reused with the permission of the Health and Social Care Information Centre. Copyright © 2021 Dr Foster Limited, trading as Dr Foster, Registered Company No. 3812015. \*\*\*\* Data suppressed in accordance with the NHS Digital HES Analysis Guide December 2019.

Trend (rolling 12 months)	Superspells	% of All Spells	Observed	Crude rate (%)	Expected	Expected rate (%)	Observed-expected	Relative risk	95% lower confidence limit	95% upper confidence limit	
Sep-19 to Aug-20	130	9.4%	130	11	8.5%	11.5	8.8%	-0.5	95.8	47.8	171.5
Oct-19 to Sep-20	132	9.5%	132	11	8.3%	12.8	9.7%	-1.8	86.0	42.9	153.8

Basket: **Diagnoses Metric: Mortality (In-hospital)** Time period: **Last available 12 months**

ICD10 (3-char): **I21 Acute myocardial infarction, I22 Subsequent myocardial infarction** Sex: **Male**

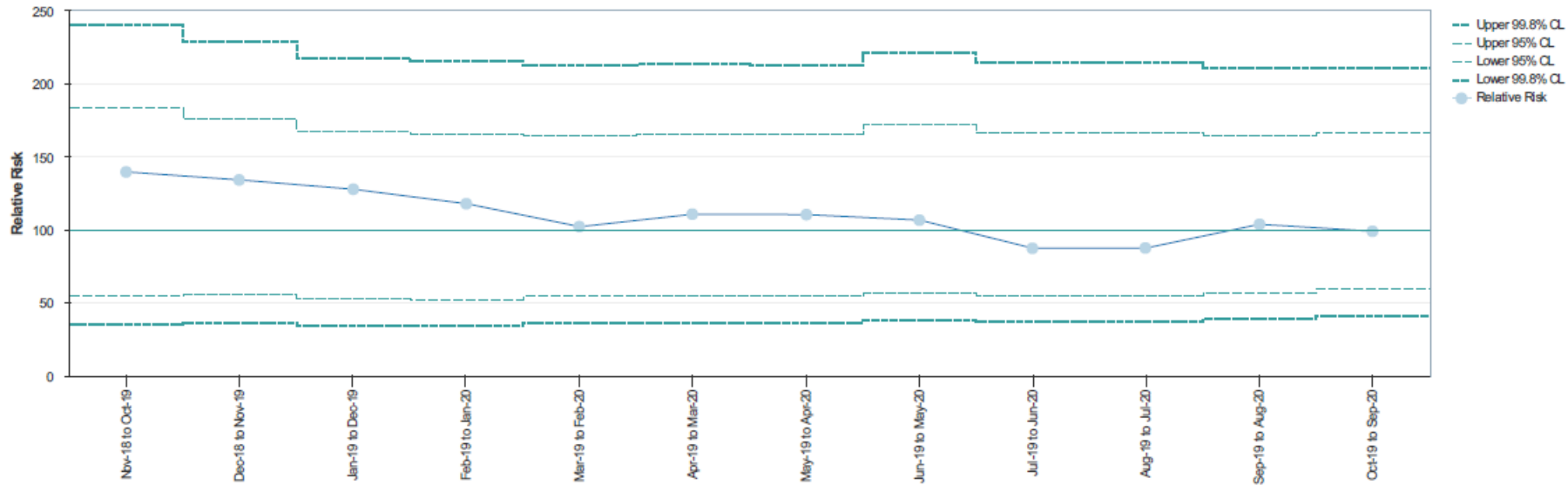
Patients: **215** Superspells: **221 (102.8)** First / Last: **Oct 2019 / Sep 2020** Deaths: **14 (6.3%)** LOS: **5.7**

Expected: **14.2 (6.4%)** O-E: **-0.2 (-0.0%)** Relative Risk: **98.8 (54.0-165.9)** Model: **Month: Jul 2020** C-Statistic: **Multiple**

**Diagnoses | Mortality (in-hospital) | Oct 2019 - Sep 2020 | Trend (rolling 12 months)**

ICD10 (3-char): I21 Acute myocardial infarction, I22 Subsequent myocardial infarction | Sex: Male

Period: Rolling 12 months



Trend (rolling 12 months)	Superspells	% of All Spells	Observed	Crude rate (%)	Expected	Expected rate (%)	Observed-expected	Relative risk	95% lower confidence limit	95% upper confidence limit	
All	2,438	100.0%	2,443	162	6.6%	148.1	6.1%	13.9	109.4	93.2	127.6
Nov-18 to Oct-19	195	8.0%	196	14	7.2%	10.0	5.1%	4.0	139.5	76.2	234.0
Dec-18 to Nov-19	207	8.5%	208	15	7.2%	11.2	5.4%	3.8	134.0	74.9	221.0
Jan-19 to Dec-19	205	8.4%	206	15	7.3%	11.8	5.7%	3.2	127.6	71.4	210.5
Feb-19 to Jan-20	203	8.3%	204	14	6.9%	11.9	5.9%	2.1	117.7	64.3	197.5
Mar-19 to Feb-20	204	8.4%	205	13	6.4%	12.7	6.2%	0.3	102.0	54.3	174.4
Apr-19 to Mar-20	204	8.4%	204	14	6.9%	12.7	6.2%	1.3	110.6	60.4	185.5
May-19 to Apr-20	196	8.0%	196	14	7.1%	12.7	6.5%	1.3	110.3	60.2	185.0
Jun-19 to May-20	190	7.8%	190	13	6.8%	12.2	6.4%	0.8	106.5	56.6	182.1
Jul-19 to Jun-20	201	8.2%	201	11	5.5%	12.6	6.3%	-1.6	87.2	43.5	156.0
Aug-19 to Jul-20	201	8.2%	201	11	5.5%	12.6	6.3%	-1.6	87.4	43.6	156.4

Copyright © 2021, reused with the permission of the Health and Social Care Information Centre. Copyright © 2021 Dr Foster Limited, trading as Dr Foster, Registered Company No. 3812015. \*\*\*\* Data suppressed in accordance with the NHS Digital HES Analysis Guide December 2019.

Trend (rolling 12 months)	Superspells	% of All Spells	Observed	Crude rate (%)	Expected	Expected rate (%)	Observed-expected	Relative risk	95% lower confidence limit	95% upper confidence limit	
Sep-19 to Aug-20	211	8.7%	211	14	6.6%	13.5	6.4%	0.5	103.6	56.6	173.9
Oct-19 to Sep-20	221	9.1%	221	14	6.3%	14.2	6.4%	-0.2	98.8	54.0	165.9

