

# Ophthalmology



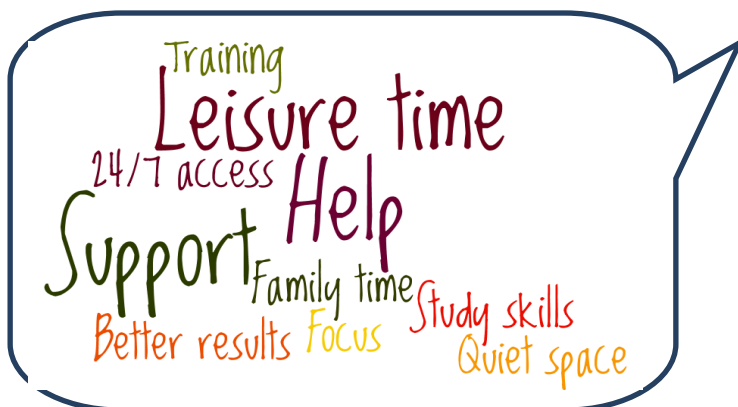
**The Trust Libraries**

**THE TRUST LIBRARIES**  
**MAIDSTONE ACADEMIC CENTRE**  
**TUNBRIDGE WELLS EDUCATION & TRAINING CENTRE**

So much more than just **books** and **journals**, your libraries also have  
**24/7 internet access, study areas, leisure reading,**  
**DVDs** and the daily newspaper!

We also have a **Book Club** at Tunbridge Wells Hospital  
and **Film Society** at Maidstone Hospital

**Are you studying or simply in need of a quiet space?**



**Libraries**  
**help!**



Use your **workplace library**  
We are accessible 24/7  
**Study in peace** away from workplace  
pressures: **plenty of IT and**  
**desk space here!**

We can **train you** to find the  
**best information** and help with  
**study skills**  
(see back page for contact details)

**YOUR MTW LIBRARIES; search 'Library' on the Trust intranet**  
**for more information.**

## A selection of popular titles in your specialty area.

For more resources both electronic & in print go to  
[www.southeastlibrarysearch.nhs.uk](http://www.southeastlibrarysearch.nhs.uk)

An OpenAthens account will give you access to the e-resources that are  
subscribed to both nationally & locally.

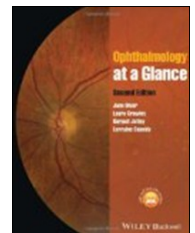
Register from an NHS network PC at [www.evidence.nhs.uk](http://www.evidence.nhs.uk)  
select 'Journals and Databases' then 'Register for Athens'.

Please contact us if you have any problems setting up your account or  
accessing resources with your login

### Print titles:

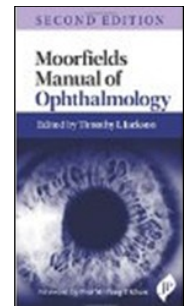
Ophthalmology at a glance 2nd ed.

by J. Olver



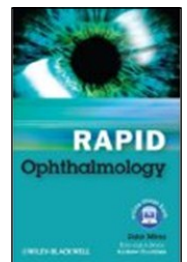
Moorfields manual of ophthalmology 2nd ed.

by T.L. Jackson



Rapid ophthalmology

by Z. Mirza



Adler's physiology of the eye : clinical application 10th ed.

by Alder F H

Ophthalmic nursing 4th ed.

by M.E. Shaw

### Journal:

Eye News held at TWH library



## E-journals:

*Access these and other electronic resources via our catalogue or NHS Evidence using an NHS OpenAthens account; see previous page for details.*

Ophthalmology



Survey of Ophthalmology (requested by Ophthalmology dept.)

American Journal of Ophthalmology

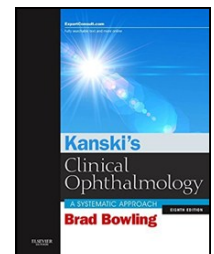


Canadian Journal of Ophthalmology

## E-Books:

Clinical ophthalmology: a systematic approach 8th ed.

by J.J. Kanski

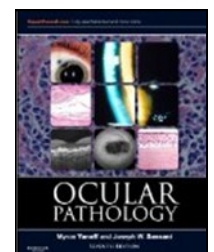


Ophthalmology 4th ed.

by M. Yanoff

Ocular pathology 7th ed.

by M. Yanoff

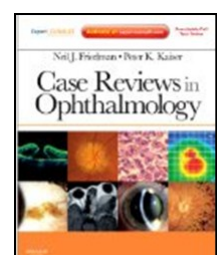


Neuro-ophthalmology: diagnosis and management

by Liu G

Case reviews in ophthalmology

by Friedman N



## British National Formulary (BNF) mobile app NOW AVAILABLE

Download the **FREE** app to Android smartphones via the Google Play Store at:  
<https://play.google.com/store/apps/details?id=uk.org.nice.bnf>

For iPhone users, the app is available to download via the Apple App Store at:  
<http://itunes.apple.com/us/app/nice-bnf/id523093958>

The app can also be downloaded to the iPod Touch.

You need an OpenAthens account to access the BNF content.  
Go to [www.evidence.nhs.uk](http://www.evidence.nhs.uk) to self-register for an OpenAthens account or you can self-register from your mobile phone at <http://m.evidence.nhs.uk/athens-registration>

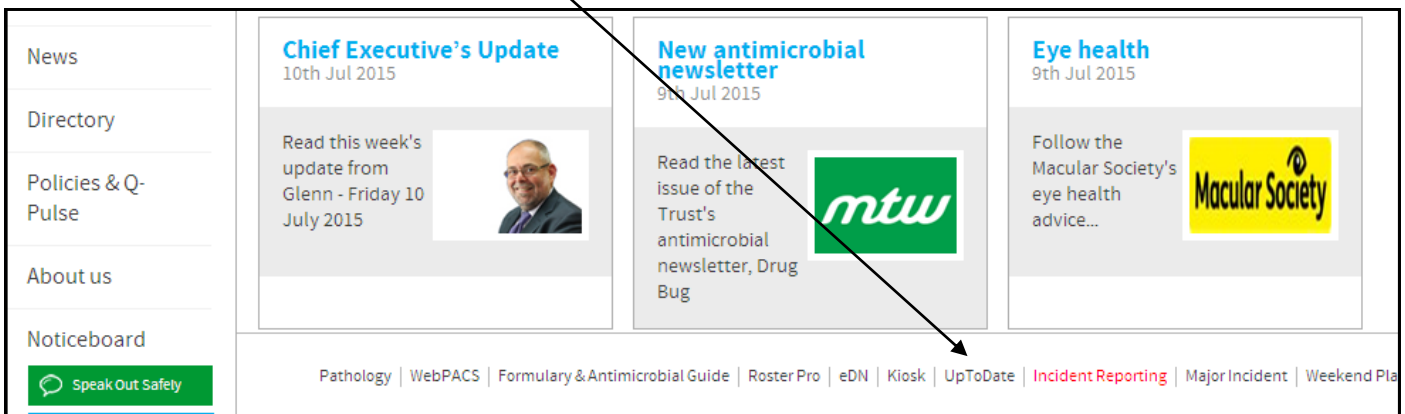
If you have any feedback on this app, please let the Trust Library Service know;  
you can email us on [mtw-tr.library@nhs.net](mailto:mtw-tr.library@nhs.net)



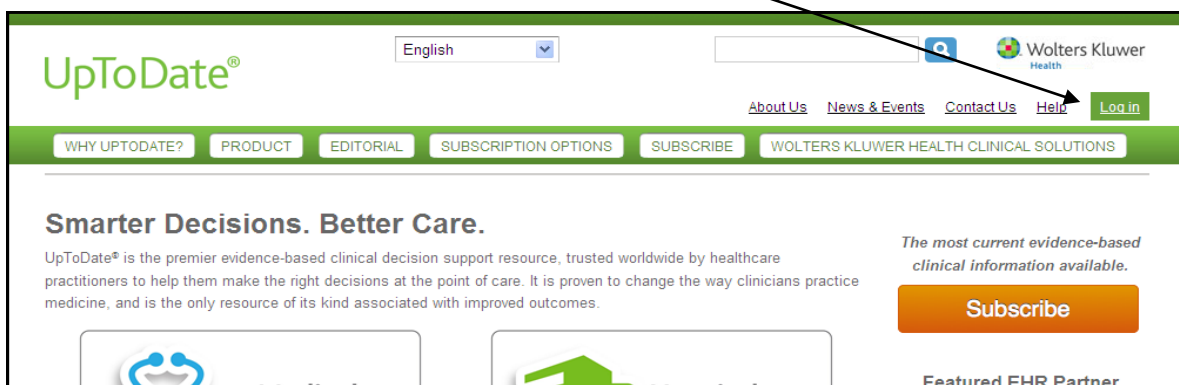
## 2 ways to access UpToDate



**On-site access:** You can access *UpToDate* simply by going to the MTW Trust intranet home page:

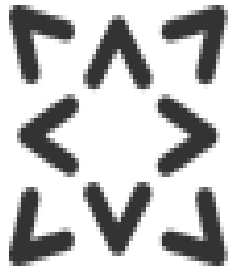


**Off-site access:** Go to [www.uptodate.com](http://www.uptodate.com) and log in with your OpenAthens account from ANYWHERE:



*UpToDate* is a popular point of care clinical reference tool which gives you access to evidence-based, peer-reviewed information to help with patient care. MTW staff are using *UpToDate* to help them to answer clinical questions, on average around 1000 times a month.

Go to [www.evidence.nhs.uk](http://www.evidence.nhs.uk) to self-register for an OpenAthens account



# KnowledgeShare

## CURRENT AWARENESS

**KnowledgeShare** is our new targeted current awareness service which will help to keep **YOU** up to date with the latest high-level evidence in **YOUR** field

**How it works:** we create your KnowledgeShare profile to be as broad or as specific as you need. For example, you could receive everything published on obstetrics or limit to receive only items related to gestational diabetes

**What's included?:** guidelines, policies and a wide range of summarised evidence is added **so that you will not be inundated with primary research articles**

KnowledgeShare interest forms are available in the Trust libraries and are also on our website:

[www.mtwlibrary.nhs.uk](http://www.mtwlibrary.nhs.uk)

Please email [mtw-tr.library@nhs.net](mailto:mtw-tr.library@nhs.net) or visit one of the Trust libraries for further information

# Anatomy TV

## NOW AVAILABLE

Access to Anatomy TV  
is now available to you with your OpenAthens account

Simply go to  
<http://www.anatomy.tv>  
and log in with your OpenAthens account.  
You can also access Anatomy TV via  
the home page of our catalogue  
[www.southeastlibrarysearch.nhs.uk](http://www.southeastlibrarysearch.nhs.uk)

Log in via OpenAthens to peel back the layers @  
[www.anatomy.tv](http://www.anatomy.tv)





# BMJ Case Reports

BMJ Case Reports is an online community that enables junior doctors to take their first steps in having their case reports and research published. It also contains over 1,500 articles which have been peer reviewed.

Simply visit

<http://casereports.bmj.com>

and log in with your OpenAthens account.

The submission code to submit case reports is **805267**

Please contact the library if you need any help in using this resource.



The screenshot shows the homepage of the BMJ Case Reports website. At the top, there is a navigation bar with links for 'Search all BMJ Products', 'BMJ', 'BMJ Journals', 'BMJ Careers', 'BMJ Learning', and 'BMJ Evidence Centre'. The main header features the 'BMJ Case Reports' logo and a search bar. Below the header, there is a navigation menu with links for 'Last 7 days', 'Archive', 'About us', 'Submit a paper', 'Become a Fellow', and 'Help'. The main content area includes a welcome message, a 'Free Editor's Choice' section with a link to an article about 'Torsades de Pointes Associated with Methadone and Voriconazole', a 'Blog' section, and a 'Become a fellow' section. On the right side, there is a sidebar with a login form, a 'Register for email alerts' button, and a 'BMJ Foundation Courses' logo. The website also features several award logos, including 'The BMJ Group Awards 2011' and 'ALPSP Award for Best New Journal 2010'.



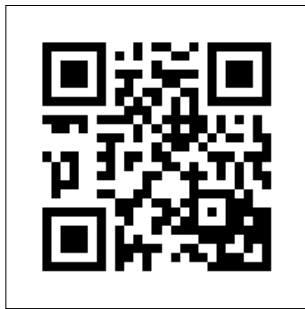
**Quick links to MTW library resources**  
*Scan with your Smartphone:*



Library Website



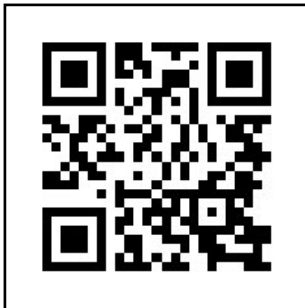
Library Catalogue



Library Help Guides



Library Departmental Bulletins



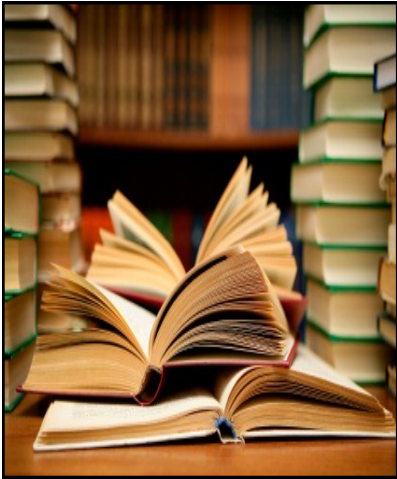
Library Blog



NICE Evidence

## Training

We provide free training in the libraries and in the workplace; do you need help with literature searching, critical appraisal or study skills? Contact Alison Millis :01892 635994 or mobile 07500814120



## Book suggestions

Please let us know if there any titles that you would like us to consider purchasing, either printed or e-book.

Contact us by telephone or email.

Contact details below.

We look forward to hearing from you.

## Library Bulletins

All Bulletins produced so far are available at the following link  
<http://www.mtw.nhs.uk/library-and-information-services/library-bulletins.asp>

Any feedback welcomed. Contact details below.

## Useful information

Maidstone Academic Centre  
01622 224647

Opening hours  
Mon-Fri 9.00am-5.00pm

Education & Training Centre  
Tunbridge Wells  
01892 635884/635489

Mon-Fri 8.30am-5.00pm

24/7 access available at both sites

Web: [www.mtwlibrary.nhs.uk](http://www.mtwlibrary.nhs.uk)

Blog: [mtwlibrary.blogspot.com](http://mtwlibrary.blogspot.com)

Email: [mtw-tr.library@nhs.net](mailto:mtw-tr.library@nhs.net)

Online catalogue: [www.southeastlibrarysearch.nhs.uk](http://www.southeastlibrarysearch.nhs.uk)