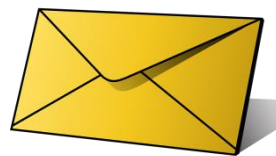


Measurement of the tube for Ear mould

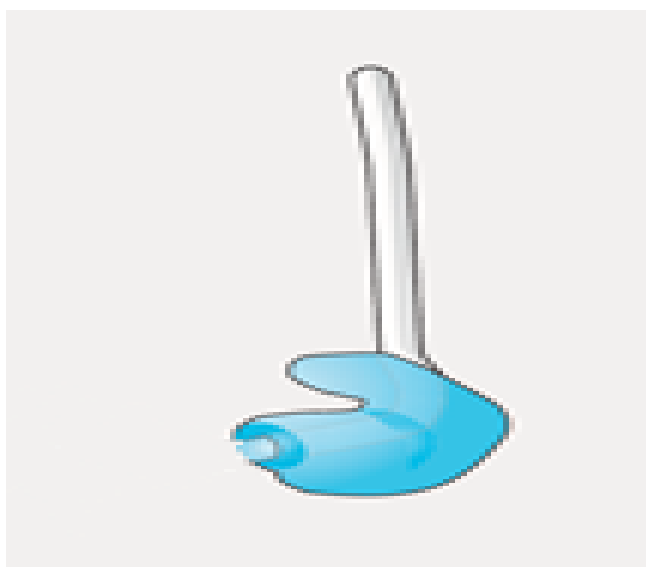
1. Your new Ear mould will be sent through post. Please note the tubing in your new Ear mould will be longer and this needs to be cut according to your ear size.



- **The post will contain Hearing aids and moulds (with long tubes).**
- Below is the Hearing aid without the mould.

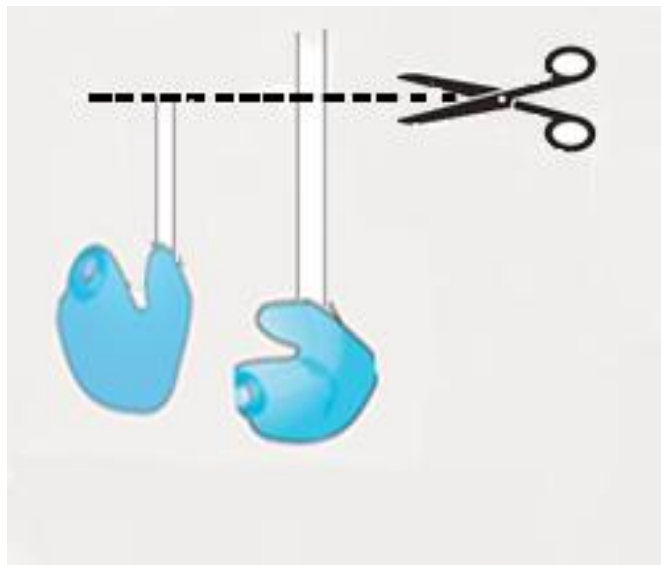


- Below is the mould with a long tube which needs to be cut to the right length as per your ear size. Make sure that you do not cut the tube too short.

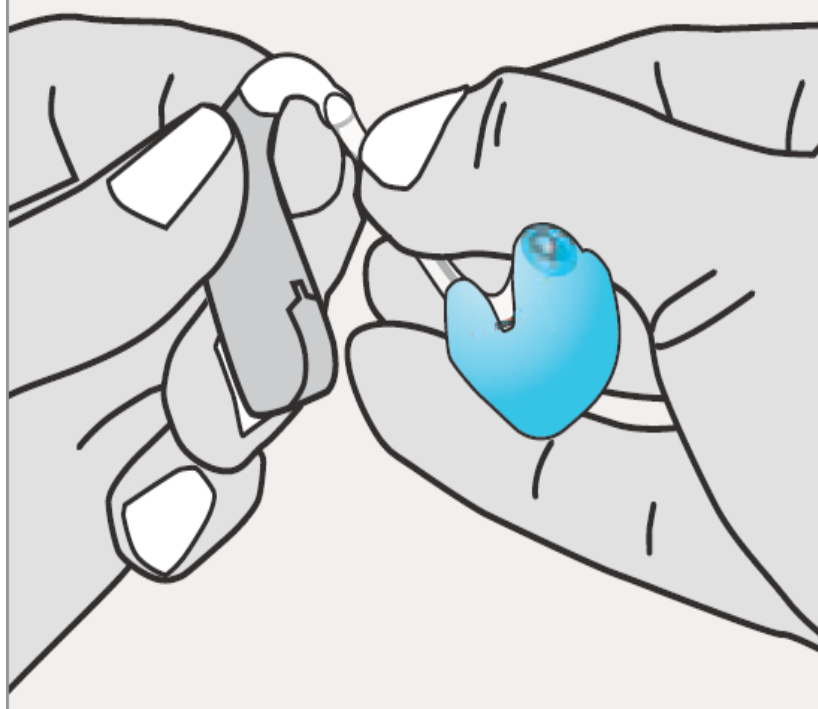


2. Place the hearing aid behind your ear and insert the mould into your ear. Then measure where the tube needs to be cut. Mark the area where the tube needs to be cut and cut the tube after taking the mould out from the ear. Make sure that you do not cut the tube too short. The right tube length will help to keep the hearing aid behind the ear in place.

*If the tube is too long or short-The hearing aid will not fit behind the ear properly.



3. Now, insert the tube of the mould into the hearing aid as shown in the picture below.



4. The curve of the earmould should line up with the curve of the hearing aid.

