

Ref: FOI/GS/ID 5857

**Please reply to:**  
FOI Administrator  
Trust Management  
Maidstone Hospital  
Hermitage Lane  
Maidstone, Kent  
ME16 9QQ  
Email: mtw-tr.foiadmin@nhs.net

03 December 2019

## **Freedom of Information Act 2000**

I am writing in response to your request for information made under the Freedom of Information Act 2000 in relation to Breast Screening & Breast Clinics.

*You asked:*

*Breast Screening – (Asymptomatic)*

- 1. Does the trust have a dedicated breast screening service/unit (Asymptomatic mammograms) – This could be separate from the main x-ray department?*
- 2. If so, what is the name of the service?*
- 3. Is this run in a static unit or on breast screening vans (Or Both)? How many vans does the service run? How many static sites does the service run?*
- 4. How many ladies are scanned/screened on average, per day on each van/static unit?*
- 5. Does the service scan on a 5 day or 7 day week?*
- 6. Who has the overall responsibility for the breast screening service?*
- 7. Please provide an organisational chart for the team/department with overall responsibility for the breast screening service*

*Symptomatic Mammography & Breast Clinics*

- 1. Which department has the responsibility for symptomatic mammograms / Symptomatic Breast Lists/Clinics? Does this come under the breast screening unit or the main radiography department of the trust?*
- 2. How many ladies are assessed on average per day in the symptomatic breast clinic?*
- 3. Does the service scan on a 5 day or 7 day week?*
- 4. Who has the overall responsibility for the symptomatic breast clinics?*
- 5. Please provide an organisational chart for the team/department with overall responsibility for the symptomatic breast clinics*

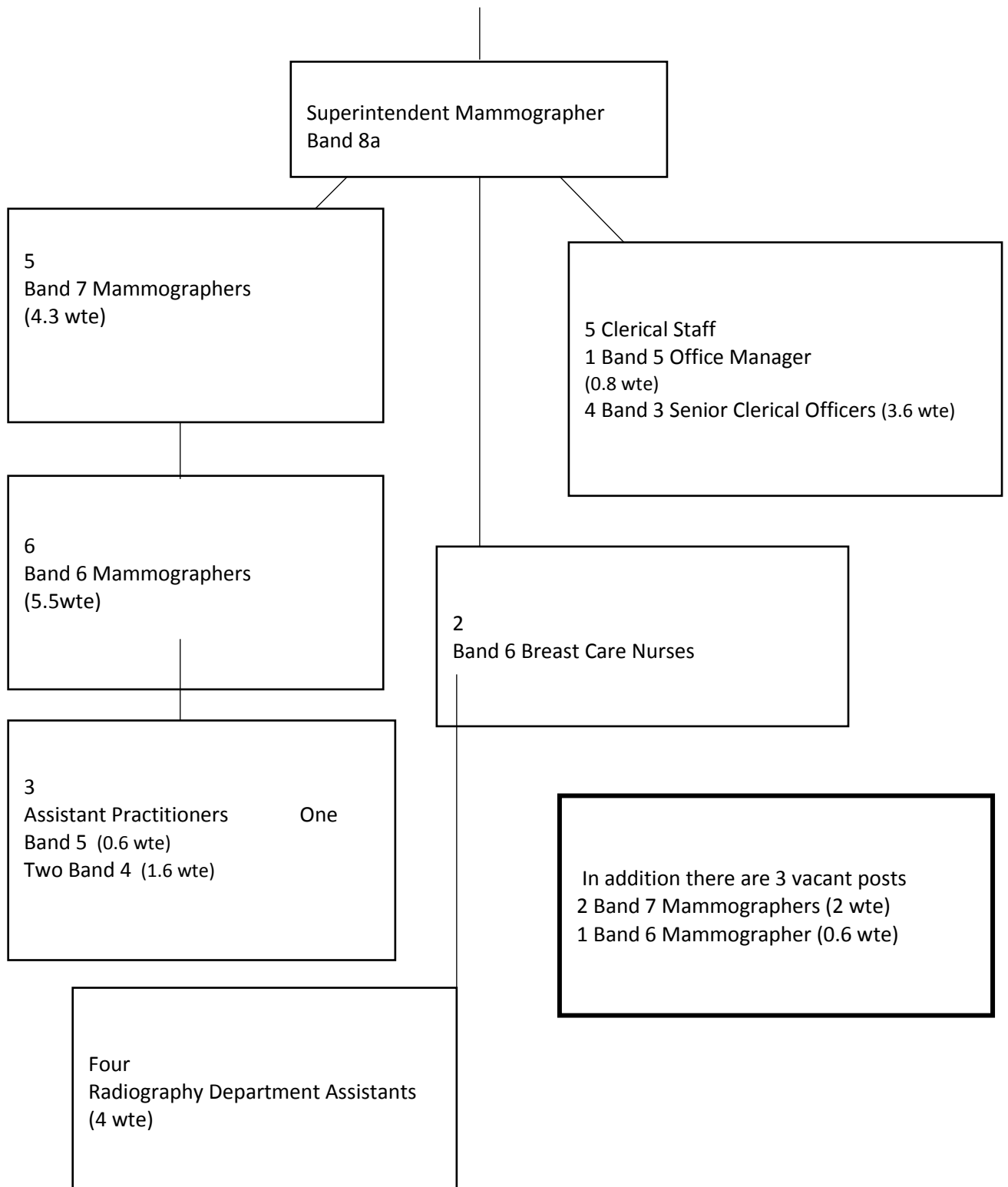
Trust response:

Breast Screening (Asymptomatic)

1. The Trust does have a dedicated breast screening service.
2. The service is part of the NHS National Breast Screening Programme. The name of the service is Maidstone and Tunbridge Wells NHS Trust Breast Screening Service.
3. The service screens in the Peggy Wood Breast Unit at Maidstone Hospital and on its two mobile breast screening vans. It does not have a dedicated static breast screening unit.
4. On average 50 ladies per day are screened on each mobile van. (2 vans, 100 ladies). In the breast unit we invite on average 7 ladies on Monday and Thursday mornings, 23 on Tuesday mornings, 24 on Wednesday evenings and 17 on a Friday afternoons.
5. The service runs 5 day a week with the occasion Saturday morning when required.
6. The overall responsibility for the breast screening service is Public Health England, at local level the Director of breast screening.
7. The Breast Unit organisational chart is below:

Maidstone and Tunbridge Wells NHS Trust  
Breast Unit Structure. November 2019

Radiology Services Manager



### Symptomatic Mammography & Breast Clinics

1. The Surgical department is responsible for the symptomatic breast clinic lists and the booking of the clinics are managed by planned care. The Peggy Wood breast unit's symptomatic office is responsible for the booking of symptomatic/follow-up mammograms.

2. The symptomatic breast clinics see new and follow-up patients. There is a maximum of 15 new patients (2 week wait cancer patients) on a One Stop Clinic where new patients are seen, the majority of whom do have either a mammogram, ultrasound or both.

3. The symptomatic service currently has a total of 10 one stop clinics over 4 days. The breast unit does image 5 days per week.

4. The lead breast surgeon has overall responsibility for the symptomatic breast clinics.

5. Please see the following table.

Maidstone and Tunbridge Wells NHS Trust  
Breast Surgery

