

Confirmatory Sample System

The Trust will operate a confirmatory sample system for blood grouping prior to administration of blood components from **25th July 2016**.

Sampling for Blood Transfusion

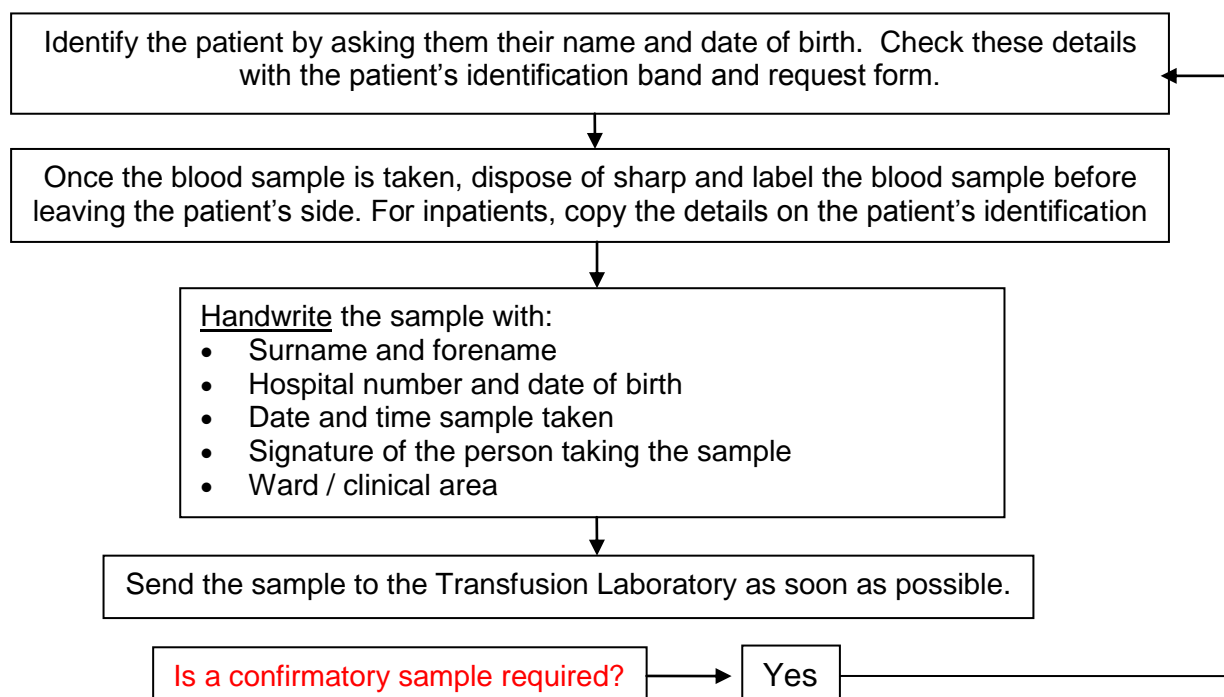
Many patients will not require a second sample, as a historical blood group would be recorded in the Transfusion Laboratory. A cord sample from new born babies will be accepted as a blood group sample.

When ordering a crossmatch, staff should check for historical blood group results on the Trust Results/Reports Viewer, if no result is found then the Transfusion Laboratory may be contacted to enquire whether a confirmatory sample is required.

If a further sample is required, it *must* be a separate venepuncture episode, *ideally* taken by a different member of staff and *must* be accompanied by a new request form. Each time blood is sampled the colleague must correctly identify the patient and complete the sampling process. See figure 1 for a summary of the procedure.

Please note that the confirmatory sample system is required for all patients receiving cross matched blood, including urgent cases. Emergency O Rh (D) blood is immediately available for life threatening emergencies and can be used until the confirmatory sample has been processed by the Transfusion Laboratory.

Process for taking blood samples for transfusion analysis



Remember!

- **Never take the initial and confirmatory sample at the same time.** This places the patient at enormous risk of receiving the wrong blood group if you have misidentified them.
- Misidentification is the commonest error in the transfusion process. Take care to positively identify the patient & check their details are correct.
- For patient safety, the transfusion laboratory exercises a 'zero tolerance' policy with regard sample labelling errors. Therefore inadequately/incorrectly completed request forms or samples will not be processed.