

---

## *The Explorer: The Trust Libraries newsletter*

➞ January 2018

---

### *Our latest information:*

**Web:** <http://www.mtw.nhs.uk/library>

**Twitter:** <https://twitter.com/mtwnhslibrary>

**Blog:** <http://www.mtwlibrary.blogspot.co.uk/>

**Instagram:** <http://www.instagram.com/mtwnhslibrary/>

---

### **Research Café**

***Have a good idea for research?** Have no ideas but want to get involved in NHS Research?*

*Need help with background information? With undertaking a literature review? With writing a proposal?  
Applying for funding? Undertaking ethics? Analyzing data?*

The Library & Knowledge Services are collaborating with the R&D team to promote research activities within the Trust. A Research Café is being launched on **Tuesday 30<sup>th</sup> January** in the library on the Maidstone site. The Trust Research Nurses and Research Governance Officer will be on hand to answer questions, please come along and find out more about the research activities that take place at MTW! A programme of monthly sessions to support researchers will also be available.

### **Discovery Tools**

We are revisiting the possibility of investing in a 'Discovery Tool' – these are essentially a single search interface via the internet that allows you to enter your terms and will then search across all our content for you. That can include our book catalogues, nationally provided content and local purchases. End users have the power to refine and limit searches to bring back the most relevant/useful content. This will have the dual benefits of making our vast set of resources more readily 'findable' and will increase hit/download rates, reducing our cost per-download ratios.

---

## Healthy Living

Visit Maidstone Trust Library and see the selection of leaflets we have on local walks. These include the Water & Apple Stroll, The Paddock Walk and the Leeds Castle Walk. Discover the local countryside and improve your health at the same time.

### Don't forget the iMac!

We have a 27" retina display iMac at the library at TWH, available for staff and trainees to use. It is NOT on the Trust network, but is connected to the internet, so can be used to view images, slides, video clips and other resources via image banks such as Anatomy TV, Clinical Key or Google Images.

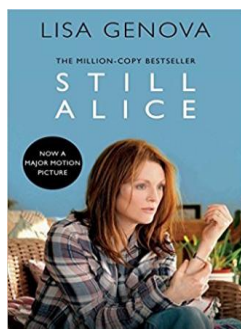
## Work Experience

The Library Team are taking on the planning and organisation of Work Experience for local students. Students who apply are expected to be 16+ and have a keen interest in careers in healthcare. We desperately need more contacts within the workforce whom we can approach to take students for work shadowing in their preferred areas of interest. The more MTW staff we can approach for help, the less often we will need to come asking individuals! Please email [mtw-tr.workexperience@nhs.net](mailto:mtw-tr.workexperience@nhs.net) for more information and to sign up.

So much more than just books and journals,  
your libraries also have  
**24/7 internet access, study areas, leisure reading,**  
**DVDs** and the daily newspaper!

We also have a **Book Club** at Tunbridge Wells Hospital  
And **Film Society** at Maidstone Hospital

## Book Club



### Book Club

Tuesday 6<sup>th</sup> March 2018  
TWH Education and Training Centre (The Library)

*Please come along – it would be wonderful to see some new faces. Contact Alison Millis for more information*  
[Alison.millis@nhs.net](mailto:Alison.millis@nhs.net)

## Mediated Literature Searches

We offer fully mediated literature searching services to support research, study and patient care. Fill in a Literature Search Request Form in the libraries or email us your search at [mtw-tr.library@nhs.net](mailto:mtw-tr.library@nhs.net).

## Literature search training times

Maidstone Library Monday 1.30-2.30pm

Tunbridge Wells Library Friday 11.30-12.30pm

We also have a trainer who can help with 1:1 training, small groups, large groups or in your workplace.

Please contact Alison Millis on 07500 814120/01892 635994 or [alison.millis@nhs.net](mailto:alison.millis@nhs.net)

## Up to Date Vs Dynamed

The current 3 year contract for access to Up-to-Date Anywhere will end in October 2018. Over the summer 2018, we plan to trial Dynamed Plus, a rival product, which is a fraction of the cost of UTD. PLEASE look out for calls from us during the summer faculty meetings to help us make direct comparisons for content, usability, portability etc. We need clinician feedback to help us make the best decision about these point of care databases before we commit to a new contract.

## Film Club

Remember to look out for details of the next film club in the Academic Centre at Maidstone Hospital. You can borrow DVD's from us at no cost.

*For more information about the library services, contact staff at either library:*

TWH: 01892 635884

Maidstone: 01622 224647

Email: [gm.e.mtw-tr.library@nhs.net](mailto:gm.e.mtw-tr.library@nhs.net)