

# ENT



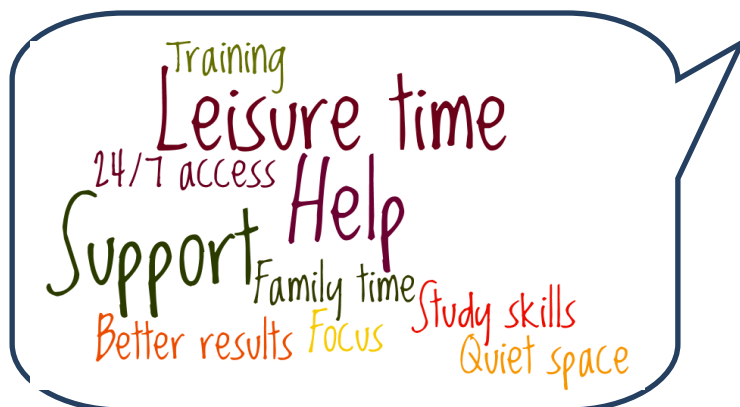
**The Trust Libraries**

**THE TRUST LIBRARIES  
MAIDSTONE ACADEMIC CENTRE  
TUNBRIDGE WELLS EDUCATION & TRAINING CENTRE**

So much more than just **books** and **journals**,  
your libraries also have  
**24/7 internet access, study areas, leisure reading,**  
**DVDs** and the daily newspaper!

We also have a **Book Club** at Tunbridge Wells Hospital  
and **Film Society** at Maidstone Hospital.

**Are you studying or simply in need of a quiet space?**



**Libraries  
help!**



Use your **workplace library**  
We are accessible 24/7  
**Study in peace** away from  
workplace pressures: **plenty of IT  
and desk space here!**

We can **train you** to find the  
**best information** and help with  
**study skills**  
(see back page for contact details).

**YOUR MTW LIBRARIES**  
**search 'Library' on the Trust intranet for more information.**

# A selection of popular titles in your specialty area.

For more resources both electronic & in print go to  
[www.southeastlibrarysearch.nhs.uk](http://www.southeastlibrarysearch.nhs.uk)

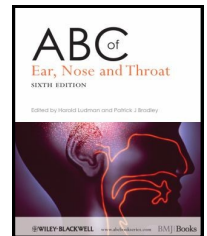
An OpenAthens account will give you access to the e-resources  
that are subscribed to both nationally & locally.

Register from an NHS network PC at [www.evidence.nhs.uk](http://www.evidence.nhs.uk)  
select 'Journals and Databases' then 'Register for Athens'.

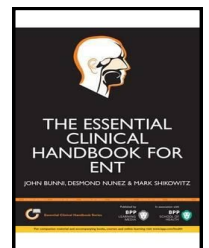
Please contact us if you have any problems setting up your account or  
accessing resources with your login

## Books:

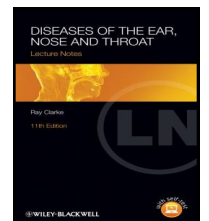
ABC of ear, nose and throat 6th ed  
by Ludman H



The essential clinical handbook for ENT surgery,  
the ultimate companion for ear, nose and throat surgery  
Including a chapter on facial plastic surgery  
by Nunez D A

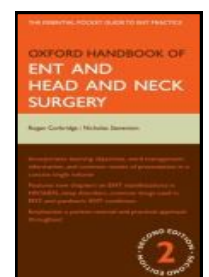


Lecture notes: diseases of the ear, nose and throat 11th ed  
by Clarke R



Oxford handbook of ENT and head and neck surgery  
by Corbridge R

ENT OSCEs: a guide to passing the DO-HNS and MRCS (ENT)  
OSCE  
by Kullar P



Scott-Brown's otorhinolaryngology, head and neck surgery : vols1,2&3  
7th ed  
by Scott-Brown W G

MCQs for ENT: specialist revision guide for the FRCS  
by Winter S

Access these and other electronic resources via our catalogue or NICE Evidence using an NHS OpenAthens account; see previous page for details.

**E-journals:** Check catalogue entry for individual title holdings.

Annals of Otolaryngology, Rhinology and Laryngology

Operative Techniques in Otolaryngology - Head and Neck Surgery

Clinical Otolaryngology

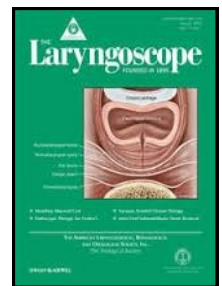
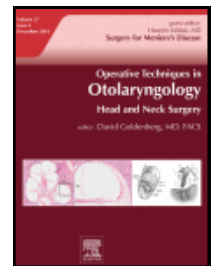
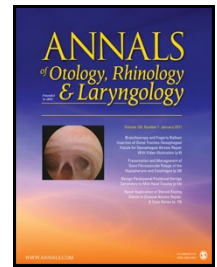
Journal of Laryngology and Otolaryngology

Ear, Nose and Throat Journal

Case Reports in Otolaryngology

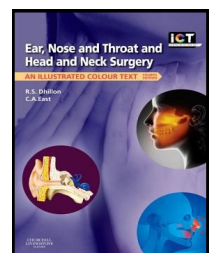
Otolaryngologic Clinics of North America

Laryngoscope

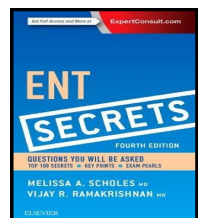


**E-books:**

Ear, nose and throat and head and neck surgery: an Illustrated colour text 4th ed  
by Dhillon R S

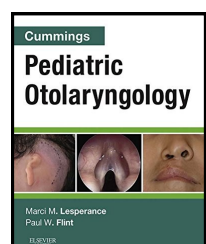


ENT secrets 4th ed  
by Scholes M



Cummings otolaryngology: head and neck surgery 6th ed  
by Flint P W

Cummings pediatric otolaryngology  
by Lesperance M M



Otologic surgery / Brackmann D E 4th ed

# British National Formulary (BNF)

## MOBILE APP NOW AVAILABLE

Download the **FREE** app to Android smartphones via the Google Play Store at:  
<https://play.google.com/store/apps/details?id=uk.org.nice.bnf>

For iPhone users, the app is available to download via the Apple App Store at:  
<http://itunes.apple.com/us/app/nice-bnf/id523093958>

The app can also be downloaded to the iPod Touch.

You need an OpenAthens account to access the BNF content.  
Go to [www.evidence.nhs.uk](http://www.evidence.nhs.uk) to self-register for an OpenAthens account or you can self-register from your mobile phone at <http://m.evidence.nhs.uk/athens-registration>

If you have any feedback on this app, please let the Trust Library Service know;  
you can email us on [mtw-tr.library@nhs.net](mailto:mtw-tr.library@nhs.net)

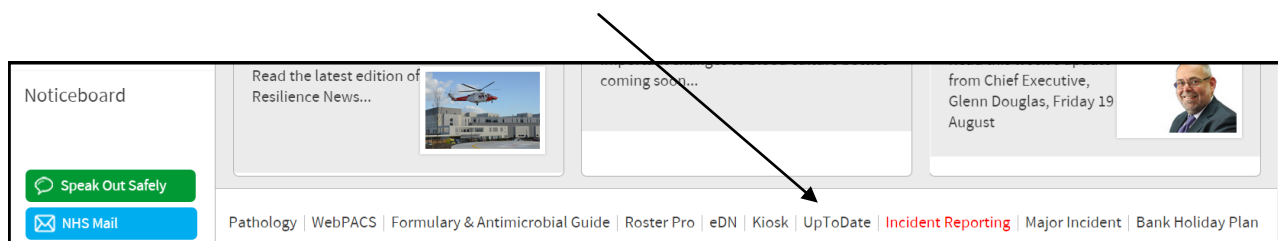


## 2 ways to access UpToDate

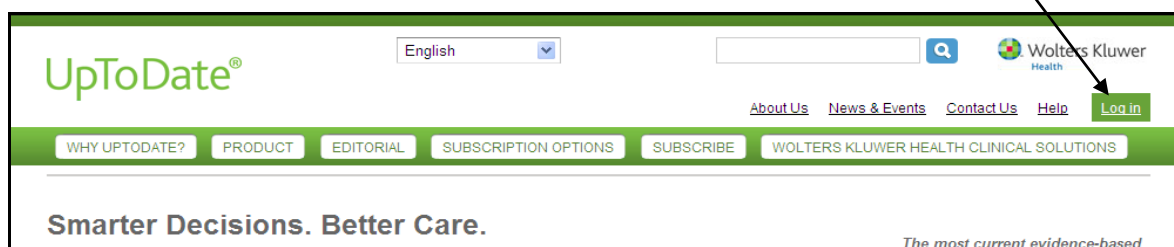
**UpToDate** is a popular point of care clinical reference tool which gives you access to evidence-based, peer-reviewed information to help with patient care.

MTW staff are using **UpToDate** to help them to answer clinical questions, on average around 1000 times a month.

**On-site access:** You can access **UpToDate** simply by going to the MTW Trust intranet home page:



**Off-site access:** Go to [www.uptodate.com](http://www.uptodate.com) and log in with your UpToDate Anywhere account from ANYWHERE:



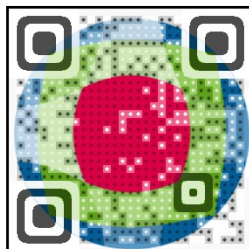
## Register for UpToDate<sup>®</sup> Anywhere

Free UpToDate Mobile App for your iOS<sup>®</sup>, Android<sup>™</sup> or Windows 8 device

*Now UpToDate clinical decision support is as close as your smartphone, tablet, or computer. UpToDate Anywhere gives you evidence-based guidance when and where you need it.*

### Registration is easy:

- Access UpToDate **from within** the Trust network by clicking on the UpToDate link on the bottom right of the Trust intranet page.
- Click on **Log in/Register** in the top navigation bar of the UpToDate log in page.
- Create a unique user name and password on the UpToDate Anywhere registration page.
- You are now registered and will receive a confirmation email about installing the UpToDate Mobile App.





## CURRENT AWARENESS

**KnowledgeShare** is our new targeted current awareness service which will help to keep **YOU** up to date with the latest high-level evidence in **YOUR** field

**How it works:** we create your **KnowledgeShare** profile to be as broad or as specific as you need.

For example, you could receive everything published on obstetrics or limit to receive only items related to gestational diabetes

**What's included?:** guidelines, policies and a wide range of summarised evidence is added **so that you will not be inundated with primary research articles**

**KnowledgeShare** interest forms are available in the Trust libraries and are also on our website:

[www.mtw.nhs.uk/library](http://www.mtw.nhs.uk/library)

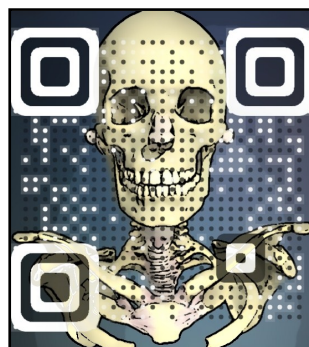
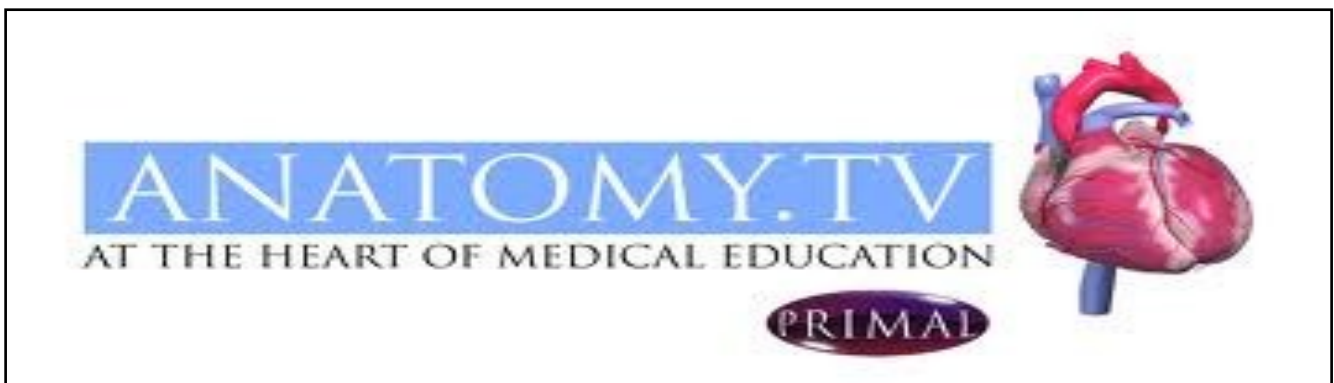
Please email [mtw-tr.library@nhs.net](mailto:mtw-tr.library@nhs.net) or visit one of the Trust libraries for further information

# Anatomy TV NOW AVAILABLE

Access to Anatomy TV  
is now available to you with your OpenAthens account

Simply go to  
<http://www.anatomy.tv>  
and log in with your OpenAthens account.  
You can also access Anatomy TV via  
the home page of our catalogue  
[www.southeastlibrarysearch.nhs.uk](http://www.southeastlibrarysearch.nhs.uk)

Log in via OpenAthens to peel back the layers @  
[www.anatomy.tv](http://www.anatomy.tv)



# BMJ Case Reports

BMJ Case Reports is an online community that enables junior doctors to take their first steps in having their case reports and research published.

It also contains over 1,500 articles which have been peer reviewed.

Simply visit

<http://casereports.bmj.com>

and log in with your OpenAthens account.

The submission code to submit case reports is **805267**

Please contact the library if you need any help in using this resource.



# Quick links

*Scan with your Smartphone:*



Library Website



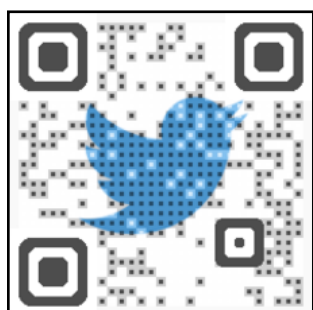
Library Catalogue



Library Blog



Instagram



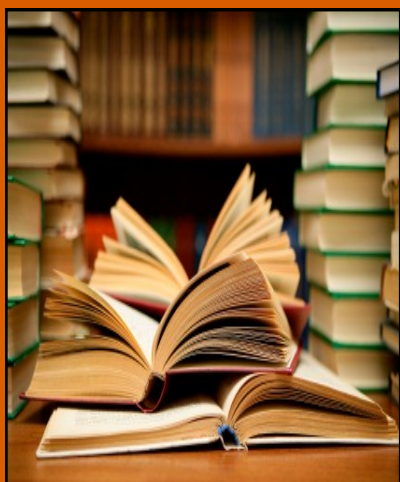
Library Twitter



NICE Evidence

## Training

We provide free training in the libraries and in the workplace; do you need help with literature searching, critical appraisal or study skills? Contact Alison Millis :01892 635994/ 07500814120 or email her on [alison.millis@nhs.net](mailto:alison.millis@nhs.net)



## Stock suggestions

Please let us know if there any titles that you would like us to consider purchasing, either printed or electronic.

Contact us by telephone or email.

Contact details below.

We look forward to hearing from you.

## Library Bulletins: Resources by Specialty

All Bulletins produced so far are available at the following link  
<http://www.mtw.nhs.uk/education/library-knowledge-services/databases-and-resources/>

Any feedback welcomed. Contact details below.

## Useful information

Maidstone Academic Centre  
01622 224647

Opening hours  
Mon-Fri 9.00am-5.00pm

Education & Training Centre  
Tunbridge Wells  
01892 635884/635489

Mon-Fri 8.30am-5.00pm

24/7 access available at both sites

Web: [www.mtw.nhs.uk/library](http://www.mtw.nhs.uk/library)

Blog: [mtwlibrary.blogspot.com](http://mtwlibrary.blogspot.com)

Email: [mtw-tr.library@nhs.net](mailto:mtw-tr.library@nhs.net)

Online catalogue: [www.southeastlibrarysearch.nhs.uk](http://www.southeastlibrarysearch.nhs.uk)

Follow us on Instagram & Twitter: search for [mtwnhslibrary](#)